

PIM2403 INTELLIGENT PLUG-IN CONTROL MODULE

75W

UNIVERSAL DRIVE FOR BRUSHLESS, DC BRUSH, LINEAR AND STEP MOTORS

The PIM2403 is a new Technosoft high-performance intelligent plug-in control module, combining motion controller, drive and PLC functionality in a single compact unit.

The PIM2403 drive is a flexible, cost effective and compact solution, particularly adapted for distributed and co-ordinated control of brushless, DC, linear or step motors of powers up to 75W, with voltages up to 24V.

Typical applications include distributed motor control with possibilities of gearing and electronic CAM functions in a CAN network operation (optional configuration).

The PIM2403 hardware structure is based on a cost optimised design integrating all the basic motor control functions and motion control functionality on a single module. A series of I/O signals, both digital and analogue, are available for easy interfacing with the application.

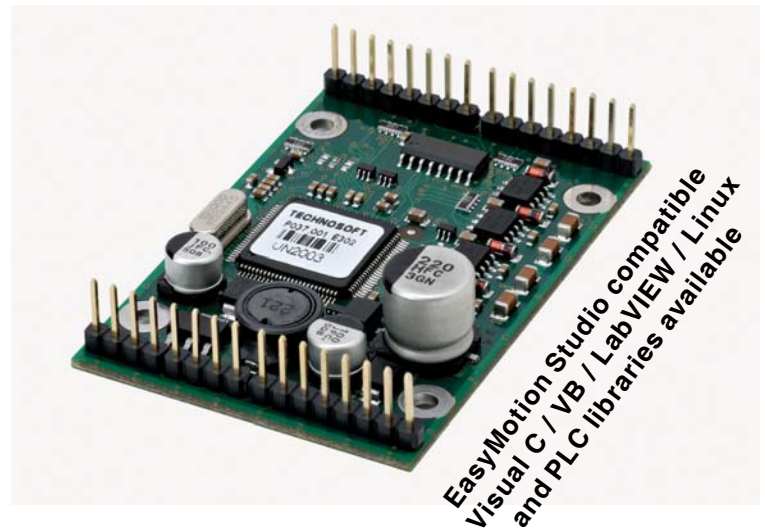
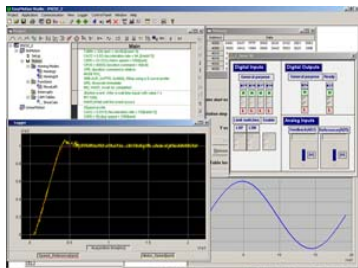
A complete set of high-level Technosoft Motion Language (TML) instructions permit to define and start complex motion sequences from your host, PC, or to execute pre-stored motion sequences selected from I/O lines, in a stand-alone mode.

The embedded Intelligence of the PIM2403 facilitates its configuration and programming through a high level graphical interface as the EasyMotion Studio.

YOUR NEXT INTELLIGENT MOVE "MOTION CONTROL AT THE CLICK OF A MOUSE"

The configuration, tuning and programming of the PIM2403 intelligent drive is easy using the powerful graphical Technosoft EasyMotion Studio.

System **configuration** and **parameterization** are performed by the selection and test of system structure, motor and sensors type and control mode.



FEATURES

- Fully digital servo drive with embedded intelligence and PLC functionality
- Suitable for brushless (sinusoidal or trapezoidal commutation), DC brush, linear and two-phase step motors
- Compact design (59x42x20 mm)
- Various control modes as:
 - Torque, speed or position control
 - Electronic gearing, contouring, profiling
 - Step motor emulation (step and direction input)
 - External variables control capabilities (pressure, flow, temperature etc.)
- Powerful Technosoft Motion Language (TML) instruction set for definition and execution of motion sequences in:
 - Single or multi axis control (master or slave mode)
 - Standalone operation with Stored Motion sequences
- RS-232 serial communication
- Optional CAN-Bus 2.0B up to 1 Mbit/s / CANopen
- Programmable digital input / outputs and analog inputs
 - 5 inputs, 5 or 24V compatible (Enable, Pulse and Direction, Limit Switches)
 - 2 outputs (open-collector), 5 or 24V compatible (Ready, GPO)
 - Differential quadrature encoder and digital Hall interface
 - Linear Hall sensors interface
 - 2 analog inputs, 0/+5V range (+/- 10V optional)
- 12 - 28V power supply and 5V logic
- High current capability (3A continuous, 6A peak current)
- Protection for over current, short circuit, earth fault, over- and under-voltage, I²t, control error
- 2.54 mm pitch header pins

TYPICAL APPLICATIONS

- Systems with distributed motor control intelligence
- Packaging equipment
- Printing
- Textile
- Automotive
- Pick and place
- Factory automation

Application notes with TML program examples available at www.technosoftmotion.com



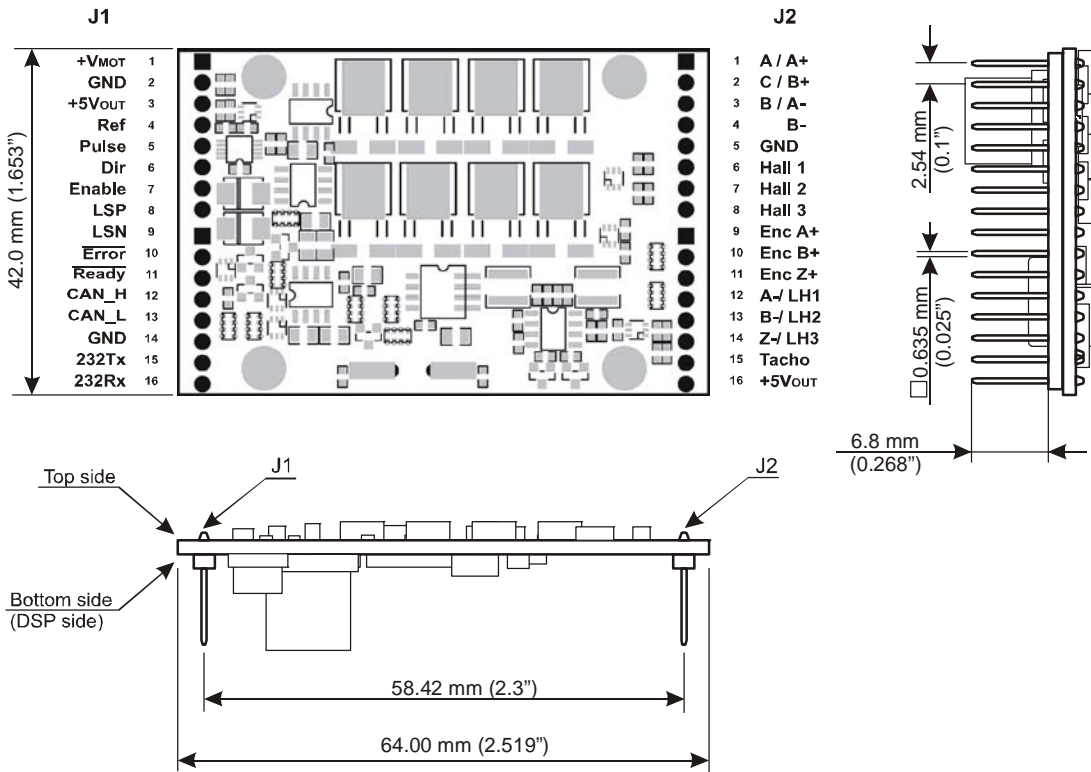
Your
Next
Intelligent
Move



TECHNO SOFT
MOTION TECHNOLOGY

DIMENSIONS, SPECIFICATION, ORDERING INFORMATION

PIM2403



Dimensions in mm
Drawings not to scale

EASYMOTION STUDIO

The high level graphical development environment EasyMotion Studio, supports the configuration, parameterization and programming of the drive, through

- Motion system set-up wizard
- Tuning assistance with capture functions
- Definition, programming and testing of motion sequences

MOTION CONTROL LIBRARIES

The TML_LIB Motion Control Libraries can be used to implement a motion control application on a PC from Visual C / C++, C#, Visual Basic, Delphi or LabVIEW under Windows or Linux operating systems. If a PLC is used as host, implementations of the TML_LIB observing the IEC 61131 standard are available for Siemens and Omron PLCs.

FLEXIBILITY

Control schemes supported by the PIM2403 Drive

Motor Types	Torque control	Speed control	Position control
Brushless DC / AC	✓	✓	✓
DC Brush	✓	✓	✓
Linear	✓	✓	✓
Step	✓	✓	✓

PIM2403 INTELLIGENT PLUG-IN CONTROL MODULE

Electrical Specifications

DC supply voltage: motor and logic	12-28V
Maximum continuous current	3A
Peak current (100 ms. max.)	6A
Minimal load inductance	100 microHenry*
Nominal switching frequency	20kHz
Operating ambient temperature	0°C-40°C

*at 24V and 20kHz switching frequency

Ordering Information

P037.001.E302	PIM2403 Plug-in Control Module, 24V, 3A, CAN
P037.001.E312	PIM2403 Plug-in Control Module, 24V, 3A, CANopen
P034.001.E002	EasyMotion Studio software
P040.001.Exxx	TML_LIB Motion Library**

**ask for existing libraries types

Headquarters

SWITZERLAND

Tel.: +41 (0)32 732 55 00
Fax: +41 (0)32 732 55 04
sales@technosoftmotion.com

GERMANY

Cell: +49 (0)1522 617 33 13
Tel.: +41 (0)32 566 70 48
Fax: +41 (0)32 732 55 04
sales.de@technosoftmotion.com

BENELUX

Tel.: +32 (0)14 21 13 21
Fax: +32 (0)14 21 13 23
sales.be@technosoftmotion.com

EASTERN EUROPE

Tel.: +40 (0)21 425 90 95
Fax: +40 (0)21 425 90 97
sales.ro@technosoftmotion.com

UNITED STATES

Tel.: +1 734 667 52 75
Fax: +1 734 667 52 76
sales.us@technosoftmotion.com

www.technosoftmotion.com